

# THREAT MODELING OF CPS IN PRACTICE

LOTFI OTHMANE  
UNIVERSITY OF IOWA



HAVE CODE CHANGES IMPACTED THE SECURITY OF THE SOFTWARE?

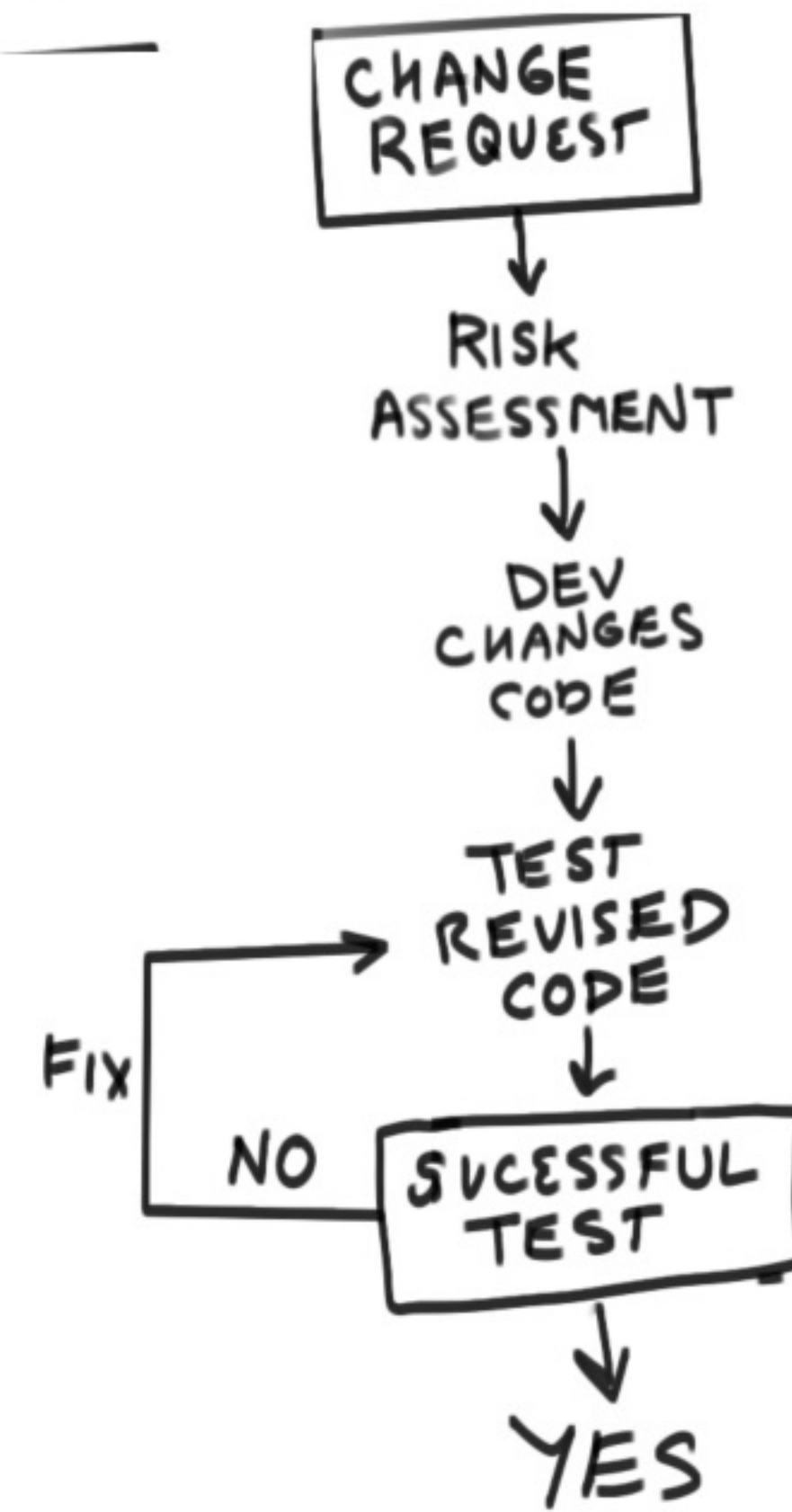
## SECURITY PRACTICES

PENETRATION TESTING IS DONE ONLY AT CERTAIN PHASES IN A PROJECT

### 11 PARTICIPANTS IN STUDY

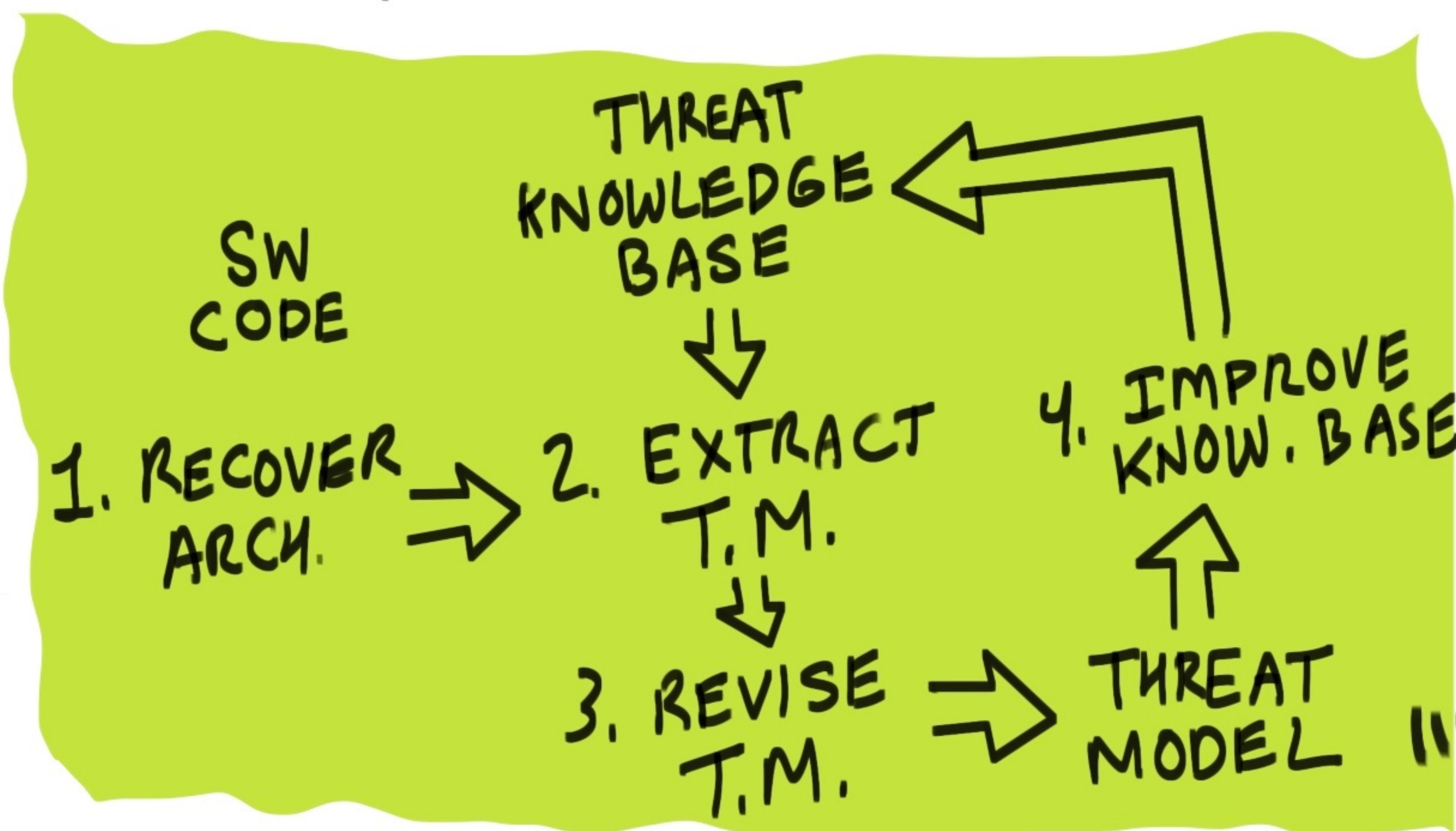
#### SECURITY ASSURANCE TECHNIQUE

1. CODE DESIGN REVIEW
2. CODE ANALYSIS
3. TESTING
4. KEYWORD SEARCH



CONTINUOUS THREAT MODELING IS USED FOR INSIGHT INTO

SECURITY + SAFETY AS WELL AS OTHER PROPERTIES



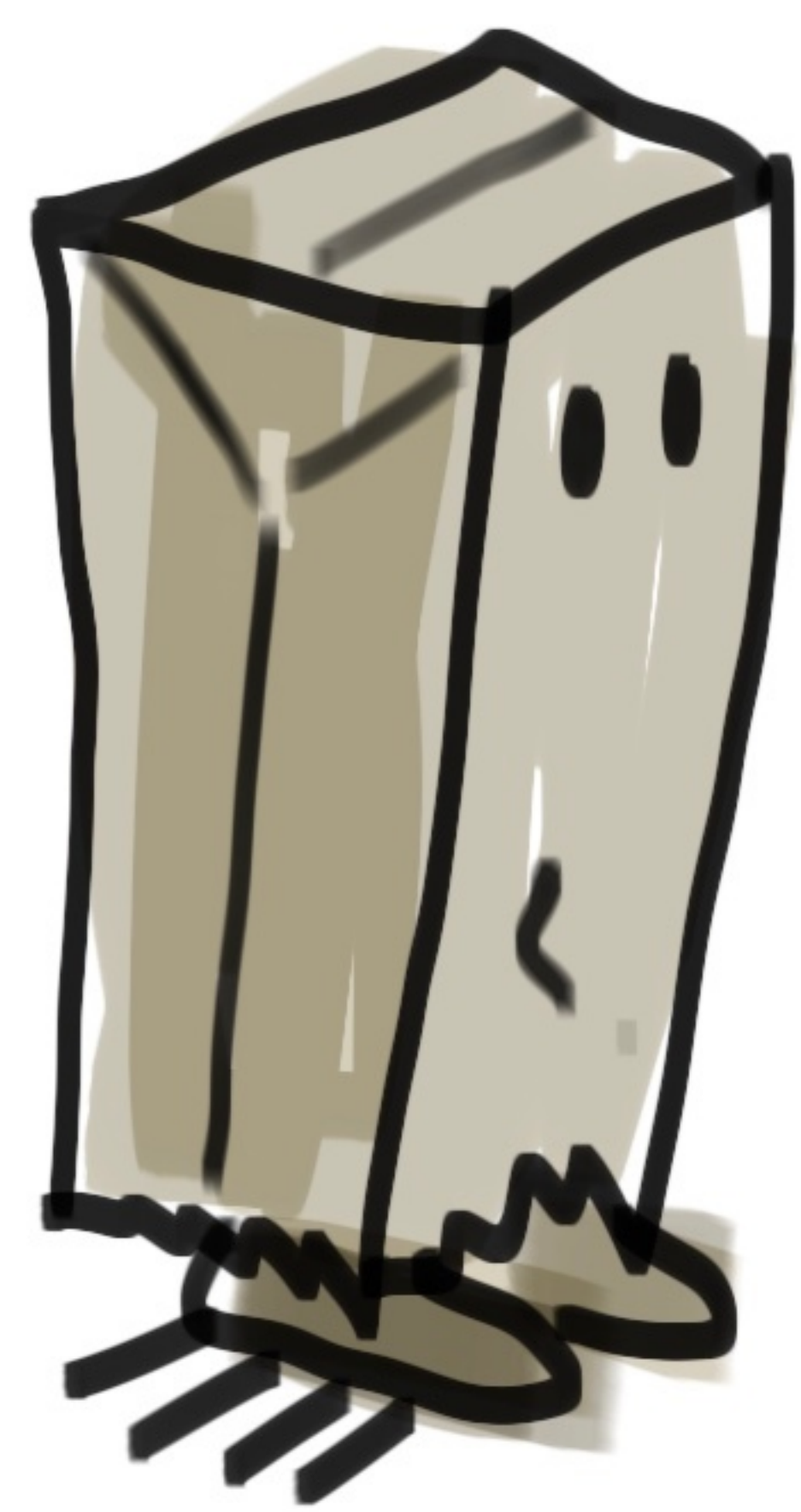
PRACTITIONERS USE A COMBINATION OF METHODS + STANDARDS TO MAKE THEIR OWN T.M. APPROACH.



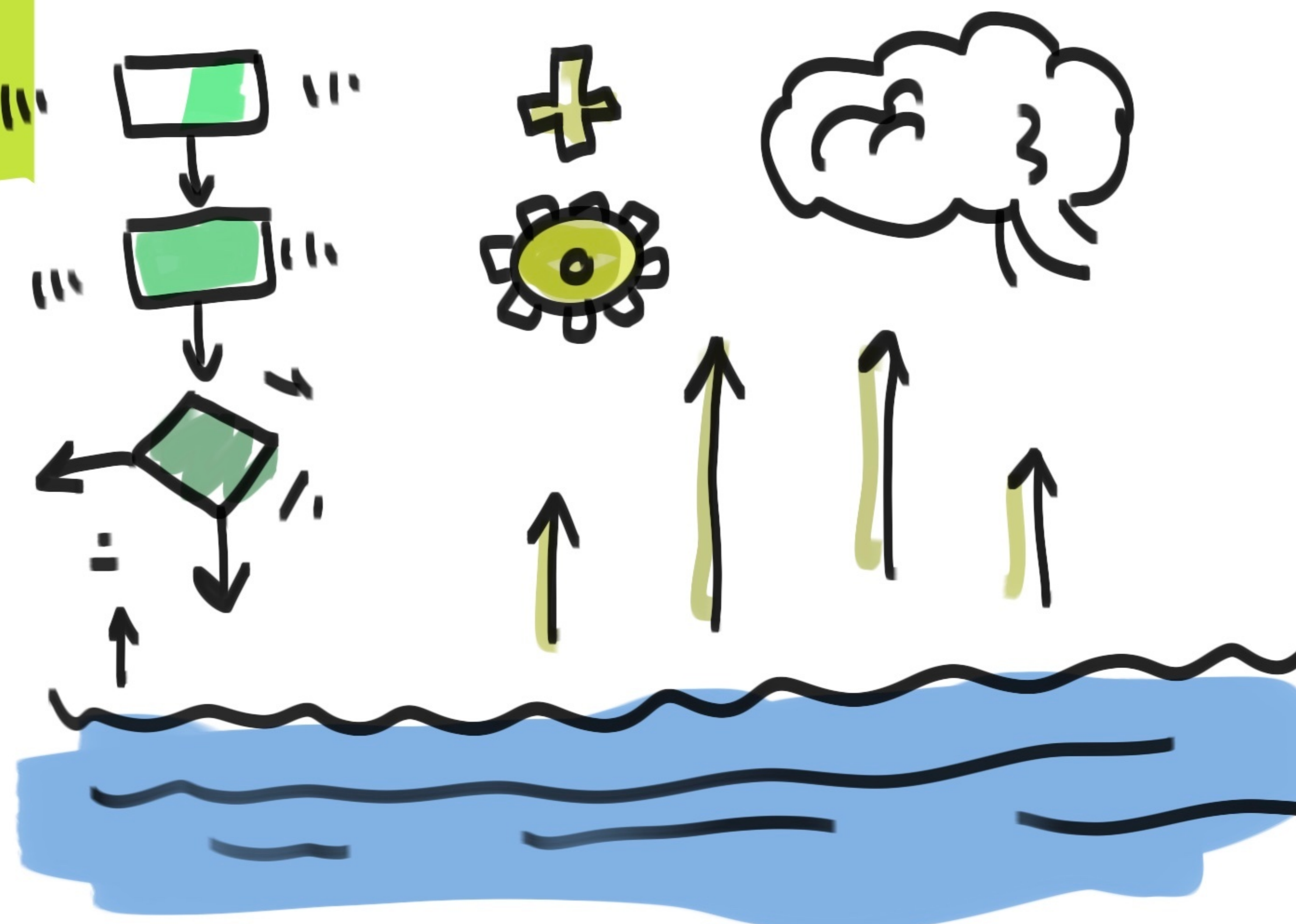
ITERATIVE IMPROVEMENT OF THE THREAT MODEL AND THE KNOWLEDGE BASE, BASED ON THE CHANGING CODE BASE

PEOPLE DON'T DO THREAT MODELING ON CHANGED CODE

VERY DANGEROUS



NOTHING TO SEE HERE...



OUTDATED ARCHITECTURE DIAGRAMS ARE A CHALLENGE FOR AUTOMATING THREAT MODELING

