



SATURN
2007

 **Software Engineering Institute** | Carnegie Mellon

SEI Software Architecture Technology User Network 2007 Workshop
May 14-16, 2007 | Sheraton, Station Square | Pittsburgh, Pennsylvania
<http://www.sei.cmu.edu/architecture/saturn>

Welcome to SATURN 2007
the Third
SEI Software Architecture Technology User
Network Workshop


PHOTOS © 2006 BY SHARON WEST. ALL RIGHTS RESERVED

Software Engineering Institute

Established in 1984 as a federally funded research and development center operated by Carnegie Mellon University

Offices in 6 locations:

- Pittsburgh, PA;
- Colorado Springs, CO;
- Frankfurt, Germany;
- Huntsville, AL;
- Los Angeles, CA;
- Washington, DC

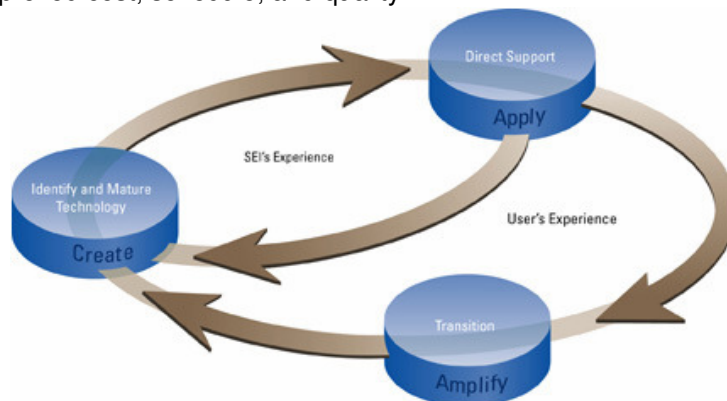
 **Software Engineering Institute** | Carnegie Mellon

Software Architecture Technology Initiative
Ipek Ozkaya, Rob Wojcik
© 2007 Carnegie Mellon University

2

SEI's Strategic Functions

The SEI advances software engineering and related disciplines to ensure the development and operation of systems with predictable and improved cost, schedule, and quality.



Software Engineering Institute

CarnegieMellon

Software Architecture Technology Initiative
Ipek Ozkaya, Rob Wojcik
© 2007 Carnegie Mellon University

3

SEI Technical Programs and Initiatives

Acquisition Support Program

Dynamic Systems Program

- Integration of Software-Intensive Systems (ISIS)
- Performance-Critical Systems (PCS)

Product Line Systems Program

- Software Architecture Technology (SAT)
- Predictable Assembly from Certifiable Components (PACC)
- Product Line Practice (PLP)

Software Engineering Process Management Program

- Capability Maturity Model Integration (CMMI)
- Software Engineering Measurement and Analysis (SEMA)
- Team Software Process (TSP)

Networked Systems Survivability Program

- CERT Coordination Center
- Survivable Enterprise Management
- Survivable Systems Engineering



Software Engineering Institute

CarnegieMellon

Software Architecture Technology Initiative
Ipek Ozkaya, Rob Wojcik
© 2007 Carnegie Mellon University

4



SEI Technical Programs and Initiatives

Acquisition Support Program

Dynamic Systems Program

- Integration of Software-Intensive Systems (ISIS)
- Performance-Critical Systems (PCS)

Product Line Systems Program

- **Software Architecture Technology (SAT)**
- Predictable Assembly from Certifiable Components (PACC)
- Product Line Practice (PLP)

Software Engineering Process Management Program

- Capability Maturity Model Integration (CMMI)
- Software Engineering Measurement and Analysis (SEMA)
- Team Software Process (TSP)

Networked Systems Survivability Program

- CERT Coordination Center
- Survivable Enterprise Management
- Survivable Systems Engineering



Software Engineering Institute

CarnegieMellon

Software Architecture Technology Initiative
Ipek Ozkaya, Rob Wojcik
© 2007 Carnegie Mellon University

5

SATURN Goals

Share experiences using SEI software architecture technology tools, methods, and practices.

Generate ideas, issues, and needs with regard to software architecture practices.

Grow a network of those interested in using and improving software architecture practices.



Software Engineering Institute

CarnegieMellon

Software Architecture Technology Initiative
Ipek Ozkaya, Rob Wojcik
© 2007 Carnegie Mellon University

6



Feedback from previous SATURN attendees

- Peer collaboration
- Exploring case studies
- SEI technical staff presence
- Developing metrics that measure benefits
- Learning what is new in software architecture
- Shared understanding of applying SEI software architecture methods
- Opportunities to learn where people are actually struggling to find solutions to problems



Software Engineering Institute

CarnegieMellon

Software Architecture Technology Initiative
Ipek Ozkaya, Rob Wojcik
© 2007 Carnegie Mellon University

7

Agenda: Workshop, May 15 -16, 2007

Keynotes

- Tools for Making Better Architecture Decisions
 - **Ian Gorton**, Senior Research Scientist, Pacific Northwest National Laboratory (PNNL)
- An Architecture Journey
 - **Jeromy Carrière**, Vice President, Architecture at Fidelity Investments

Experience reports, SEI reports, panel on ATAM, break-out and discussion sessions

Tuesday, May 15 evening reception 5:00 – 7:00 PM



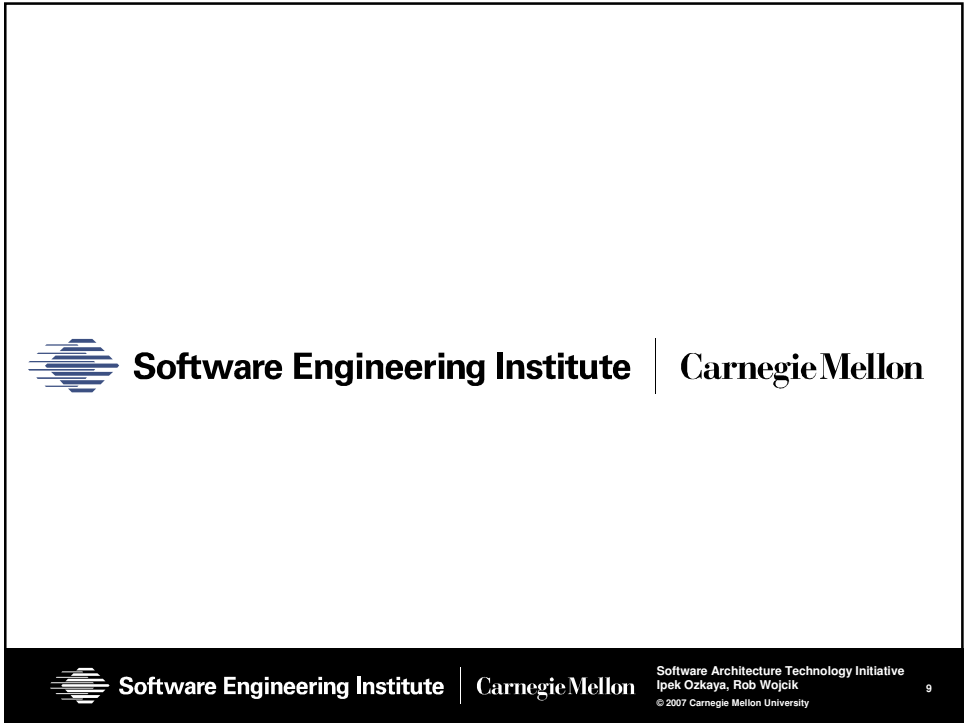
Software Engineering Institute

CarnegieMellon

Software Architecture Technology Initiative
Ipek Ozkaya, Rob Wojcik
© 2007 Carnegie Mellon University

8





Software Engineering Institute

Carnegie Mellon

Software Architecture Technology Initiative
Ipek Ozkaya, Rob Wojcik
© 2007 Carnegie Mellon University

9

