


## Using Architecture-Centric Engineering on a TSP Project

Software Engineering Institute  
Carnegie Mellon University  
Pittsburgh, PA 15213

Luis Carballo (Bursatec),  
James McHale, Robert Nord (SEI)

 Software Engineering Institute | CarnegieMellon

© 2011 Carnegie Mellon University

## The Opportunity

### Background:

- Bolsa Mexicana de Valores (BMV) operates the Mexican financial markets under license from the federal government.
- Bursatec is the technology arm of BMV.
- BMV desired a new trading engine to replace the existing stock market engine and integrate the options and futures markets.
- The BMV performed a build vs. buy analysis, and decided to replace three existing trading engines with one in-house developed system.



## The Project -1



Bursatec committed to deliver a trading engine in 8-10 quarters:

- High performance (as fast or faster than anything out there)
- Reliable and of high quality (the market **cannot** go down)
- Scalable (able to handle spikes and long-term growth in trading volume)

Architecture Decisions:

- Development in Java (lower Total Cost of Ownership)
- Low Latency Communication Multicast Network
- In memory data storage during trading session
- Hot-Hot High Availability configuration
- Parallel processing in Java Virtual Machine (JVM)
- Horizontal scalability



Software Engineering Institute

CarnegieMellon

Using Architecture-Centric Engineering on a TSP Project  
© 2011 Carnegie Mellon University

3

## The Project -2

Functional Requirements:

- Order routing with FIX protocol interconnect to current legacy systems.
- Combined Cash and Derivatives markets with a single Control Workstation.
- Separate Market Data and Index calculation system.

Bursatec approached the SEI for support during design and development.

SEI's role—provide methods, techniques, and guidance to improve Bursatec's software delivery capability:

- Training and coaching for the system architects
- Training and coaching for the development team



Software Engineering Institute

CarnegieMellon

Using Architecture-Centric Engineering on a TSP Project  
© 2011 Carnegie Mellon University

4



## A Partial List of Potential Problems

---

### Complicating factors:

- Pressure – managers replaced when commitments are not met
- Inexperience – available staff talented but young
- Large project – scope beyond the organization’s recent experience
  - # of person-months
  - # KLOC/function points
  - # of interconnecting platforms
  - # of individual projects
- Key implementation technologies never used together formally
- Constant stream of new requirements/changes to business rules



## The Proposed Solution – Integrates High-Value Architecture and Team Practices

---

### Team Software Process

- Proven technology.
- Strongly addresses management and measurement across the project lifecycle.
- Specific focus on building high-performance teams.
- Key managers familiar with technology only through word-of-mouth and literature.

### Architecture-Centric Engineering

- Proven technology.
- Strongly addresses technical aspect of the early project lifecycle activities.
- Specific focus on architecting to meet business objectives.
- Key managers familiar with technology via training courses.



## Polling Question

Have you used:

- Architecture practices with TSP (or CMMI)
- Architecture practices (without TSP)
- TSP/PSP (without architecture practices)
- Neither



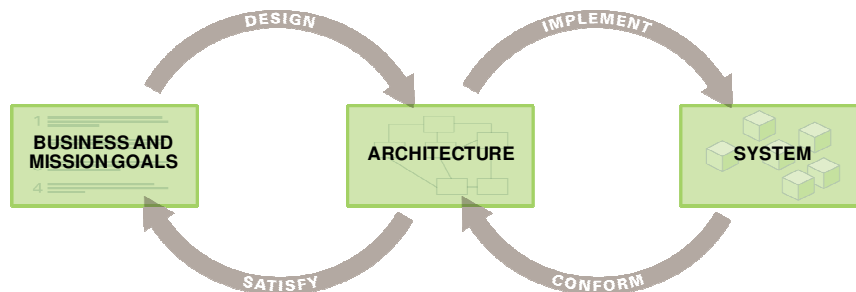
Software Engineering Institute

CarnegieMellon

Using Architecture-Centric Engineering on a TSP Project  
© 2011 Carnegie Mellon University

7

## The Engineering Process



Two iterative processes based on the architecture of the system:

*Design cycle.*

The goal is to design a system that ensures business success.

*Implementation cycle.*

The goal is to implement the system according to the design.



Software Engineering Institute

CarnegieMellon

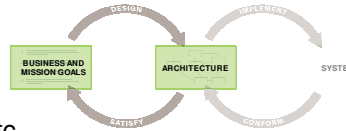
Using Architecture-Centric Engineering on a TSP Project  
© 2011 Carnegie Mellon University

8



## The Engineering Process – Design Cycle

Designing a software system is defining structures that support the quality attribute requirements, such as performance, availability, extensibility, etc.



The methods used in the design cycle are a combination of a

- *Attribute Driven Design (ADD)* method to transform the quality attribute requirements into an appropriate design
- *Views & Beyond (V&B)* documentation method to document the design to be used for evaluation and development
- Peer review process to continuously check the design to identify weaknesses, using *Architecture Tradeoff Analysis (ATAM)* techniques.

Other activities, such as quality attribute modeling might be necessary.



Software Engineering Institute

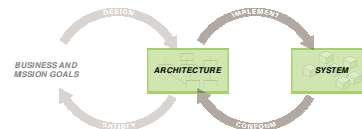
CarnegieMellon

Using Architecture-Centric Engineering on a TSP Project  
© 2011 Carnegie Mellon University

9

## The Engineering Process – Implementation Cycle

The implementation cycle is centered around establishing communication between architects and developers.



An architecture that shows how well the scenarios are supported is not enough to be implemented correctly.

- *Module views* help to describe the architecture clearly enough for implementation.
- *Active design reviews (ARID)* help to communicate the architecture effectively to the developers.
- *Conformance reviews* help to continuously check if code and architecture are synchronized.



Software Engineering Institute

CarnegieMellon

Using Architecture-Centric Engineering on a TSP Project  
© 2011 Carnegie Mellon University

10



## TSP Launch and Coaching Support

TSP supports an iterative or cyclic development strategy.

TSP can be introduced starting at any phase or any cycle.

Each cycle starts with a launch or re-launch and ends with a postmortem.

The TSP coach guides the team through each launch, re-launch, and postmortem, and provides weekly coaching support during the cycle.

Software Engineering Institute | CarnegieMellon

Using Architecture-Centric Engineering on a TSP Project  
© 2011 Carnegie Mellon University

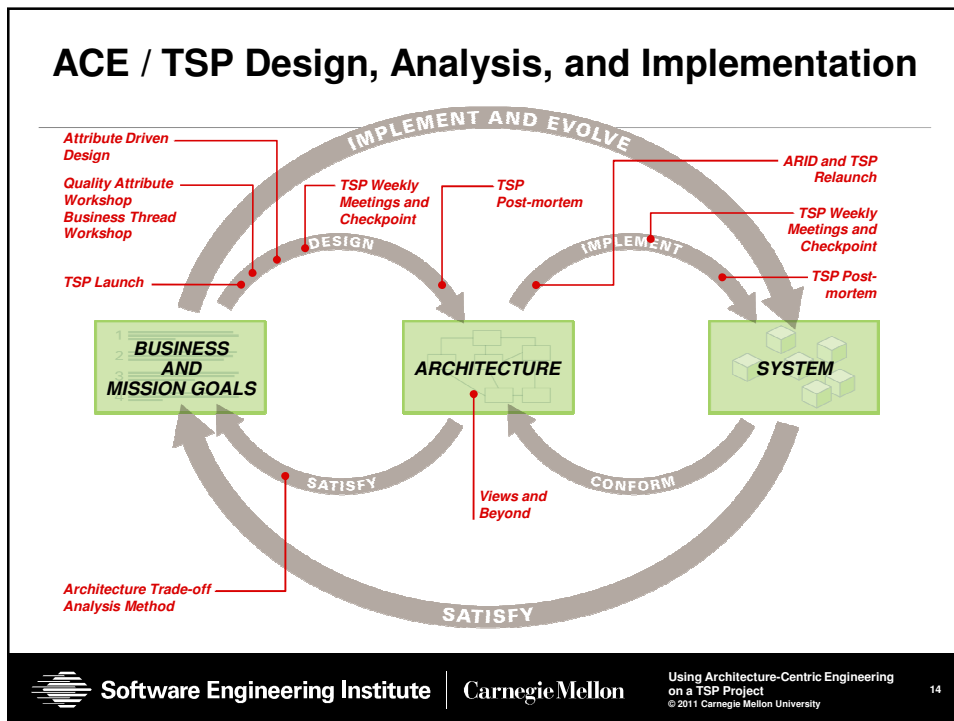
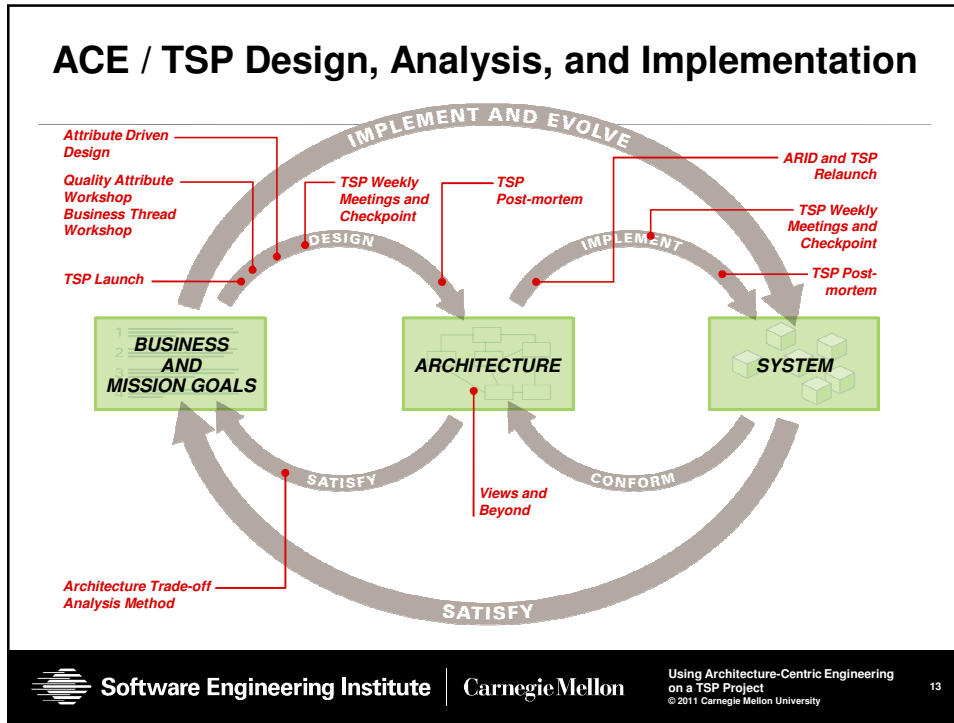
11

## ACE / TSP Design, Analysis, and Implementation

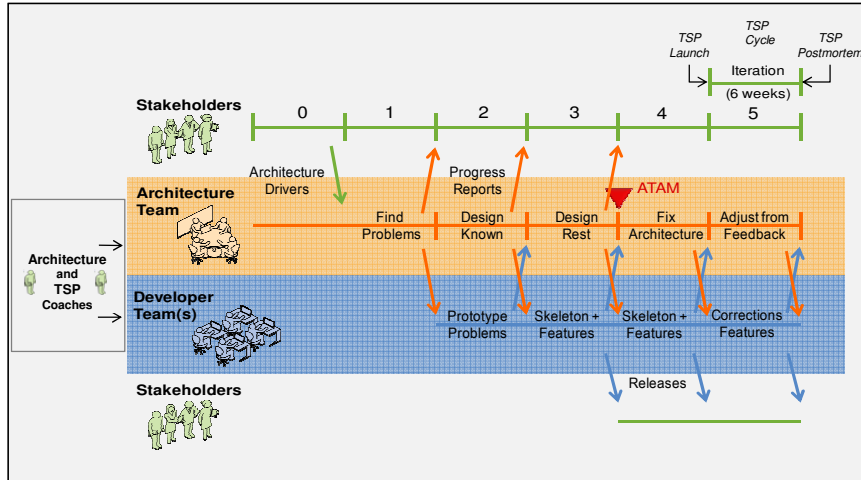
Software Engineering Institute | CarnegieMellon

Using Architecture-Centric Engineering on a TSP Project  
© 2011 Carnegie Mellon University

12



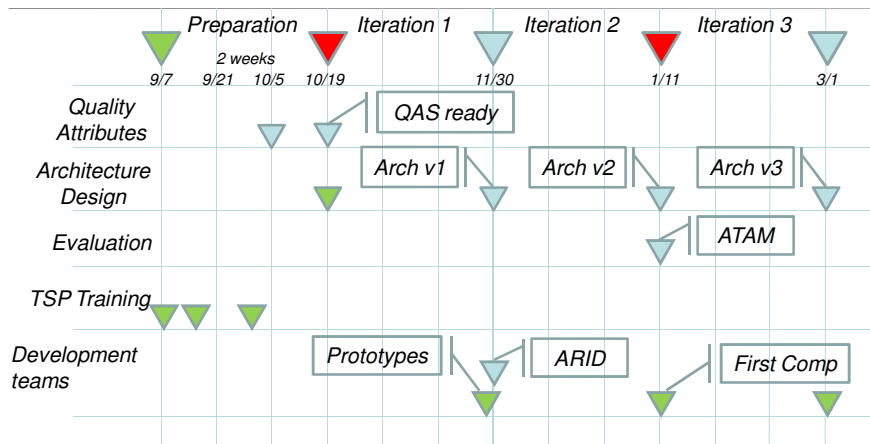
### Example Design and Implementation Strategy



### Bursatec Overall Schedule – Phase I

(based on an initial notional schedule by SEI)

Start  
Major Milestone  
Milestone





## Some Early Challenges -1

---

### Size estimates and size measurements

- TSP does a *conceptual design* for initial estimates and structuring of project plans.
- ACE calls for initial *architectural concepts or approaches*, parts of which will often survive into the final architecture.
- Bursatec had already done a lot of analysis for the buy vs. build decision, including effort estimates and initial architectural concepts.

The launch fell back on these initial estimates plus a number of user stories based on the *quality attribute scenarios* from the QAW.

The early architectural concepts helped to get better size estimates and to think about work allocation earlier.



## Some Early Challenges -2

---

### Defect management

- ACE focuses on *architectural risks*, but a TSP coach might be tempted to call them "*defects injected in HLD*".

### Risk management

- In TSP, *risks* are usually *risks to the project plan* – but that might include *architectural risks* as well!

The good news – at least one team in Mexico hasn't had any trouble dealing with potentially ambiguous English terminology.



## Some Early Challenges -3

---

### Other process issues

- Early design is exploratory in nature, becoming progressively more conventional.
- ARIDs and ATAMs – not just new names for a review or inspection.
- Agile practices – daily meetings, planning poker without the cards, two levels of time-boxing.
- Lead Architect and Performance Manager roles added to TSP to oversee architecture “fitness” both generally and specifically for the most visible quality attribute.
- Architecture conformance checks included in the cycles.



## Important Lessons Learned (So Far)

---

TSP and ACE are not simply compatible, they are complementary.

Learning cycles can be shortened; they *cannot* be short-cut!

Architecture can be coached.

TSP provides a disciplined framework for measuring and managing any structured intellectual activity.

Architectural awareness helps to structure the team and the work in addition to the product.



## Current Project Status

### Cycle 1 - Architecture

- completed Jan. 2010
- demonstrated coaching, evaluation of comm. packages, built test framework

### Cycle 2 - Infrastructure implementation

- completed Apr. 2010
- successful ATAM (no significant new architectural risks discovered)

### Cycle 3 - Basic functions and main performance loop

- completed July 2010
- good quality, performance exceeding requirements by more than a factor of 5

### Cycle 4 - Non-TSP cycle, outside evaluation by world-class experts

- completed Aug. 2010
- JVM and high-speed redundant communications

### Cycle 5 - Full normal operations, complete performance loop

- completed Jan. 2011, full round-trip performance proven

### Cycle 6 - Full functionality incl. startup, shutdown, and maintenance modes

- scheduled June 2011 (currently on time)



Software Engineering Institute

CarnegieMellon

Using Architecture-Centric Engineering  
on a TSP Project  
© 2011 Carnegie Mellon University

21

## Experience and Results

The ACE methods and architecture coaching, coupled with the discipline of the TSP, built a competent architecture team (and an architecture with successful ATAM!) quickly – less than 6 months.

The project objectives were met.

- Schedule – finished early.
- Quality – early trials and quality metrics suggest reliability and quality goals were met.
- *No known defects carried into final cycle!*
- Performance – a day's worth of transactions can be processed in seconds.



Software Engineering Institute

CarnegieMellon

Using Architecture-Centric Engineering  
on a TSP Project  
© 2011 Carnegie Mellon University

22



## Select Process Data

---

### Through cycle 5 (count)

- ~100 eKLOC in 68 weeks
  - ~58 eKLOC main engine
  - ~29 eKLOC infrastructure
  - ~13 eKLOC test structure

### Through cycle 6 (estimate)

- ~137 eKLOC in 89 weeks

### Through cycle 6 (estimate including cycle 5 actuals)

- 11.9% architecture (includes design cycle activities with the exception of QAW/BTW; does NOT include architecture maintenance, conformance, or testing activities)
- 13.1% test (unit, integration, & limited system testing)

eKLOC – effective thousands of lines of code



Software Engineering Institute

CarnegieMellon

Using Architecture-Centric Engineering on a TSP Project  
© 2011 Carnegie Mellon University

23

## Questions?

---

?



Software Engineering Institute

CarnegieMellon

Using Architecture-Centric Engineering on a TSP Project  
© 2011 Carnegie Mellon University

24



## Contact Information

---

### TSP Initiative

James W. Over  
TSP Initiative Lead  
[jwo@sei.cmu.edu](mailto:jwo@sei.cmu.edu)

Jim McHale  
TSP Mentor Coach  
[jdm@sei.cmu.edu](mailto:jdm@sei.cmu.edu)

### RTSS Program

Linda Northrop  
RTSS Program Director  
[lmn@sei.cmu.edu](mailto:lmn@sei.cmu.edu)

Felix Bachmann  
Architecture Mentor Coach  
[fb@sei.cmu.edu](mailto:fb@sei.cmu.edu)

### Business Development

David Scherb [dscherb@sei.cmu.edu](mailto:dscherb@sei.cmu.edu)  
Greg Such [gsuch@sei.cmu.edu](mailto:gsuch@sei.cmu.edu)

SEI website at [www.sei.cmu.edu](http://www.sei.cmu.edu) (~/tsp or ~/architecture)



Software Engineering Institute

CarnegieMellon

Using Architecture-Centric Engineering  
on a TSP Project  
© 2011 Carnegie Mellon University

25

## ADDITIONAL INFORMATION



Software Engineering Institute

CarnegieMellon

Using Architecture-Centric Engineering  
on a TSP Project  
© 2011 Carnegie Mellon University

26



## Getting Started

TSP/ACE is introduced into an organization on a project-by-project basis.

TSP Introduction Steps	
1.	Start by identifying candidate projects, architects, and internal architecture and TSP coach candidates.
2.	Train senior management.
3.	Train the selected teams and their managers, then launch the project.
4.	Monitor the projects and make adjustments as needed.
5.	Expand the scope to include additional projects and teams.
6.	Create or expand the pool of available SEI-authorized architects, instructors and coaches.
7.	Repeat starting at step 3.



## Selecting Pilot Projects

Pick 3 to 5 medium-to large-sized pilot projects.

- 8 to 15 team members
- 4 to 18 month schedule
- Software-intensive new development or enhancement
- Representative of the organization's work
- Important projects

Select teams with members and managers who are willing to participate.



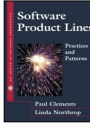

Consider the group relationships.

- Contractors
- Organizational boundaries
- Internal conflicts




## Architecture Training

	Certificate Programs		Certification
	Software Architecture Professional	ATAM Evaluator	ATAM Leader
<i>Six Courses</i>			
Software Architecture Principles and Practices*	✓	✓	✓
Documenting Software Architectures	✓		✓
Software Architecture Design and Analysis	✓		✓
Software Product Lines	✓		
ATAM Evaluator Training		✓	✓
ATAM Leader Training			✓
ATAM Observation			✓

✓ : required to receive certificate / certification  
 \* : available through e-learning

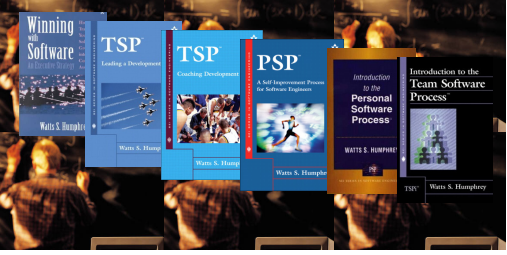

Software Engineering Institute | CarnegieMellon

Using Architecture-Centric Engineering on a TSP Project  
 © 2011 Carnegie Mellon University


29

## PSP<sup>SM</sup> and TSP Training

*Personal Software Process (PSP<sup>SM</sup>) training is essential to successful TSP implementation.*



- TSP Executive Seminar (1 day for top-level execs, middle managers)
- TSP Team Leader Training (3 days for team leads, affected managers)
- PSP Fundamentals (5 days for software developers)
- TSP Team Member Training (3 days for other disciplines)


Software Engineering Institute | CarnegieMellon

Using Architecture-Centric Engineering on a TSP Project  
 © 2011 Carnegie Mellon University

30

## Intellectual Property

Personal Software Process, PSP, Team Software Process, and TSP are service marks of Carnegie Mellon University.

Architecture Tradeoff Analysis Method and ATAM are registered in the U.S. Patent and Trademark Office by Carnegie Mellon University.



Software Engineering Institute

CarnegieMellon

Using Architecture-Centric Engineering on a TSP Project  
© 2011 Carnegie Mellon University

31

### NO WARRANTY

THIS CARNEGIE MELLON UNIVERSITY AND SOFTWARE ENGINEERING INSTITUTE MATERIAL IS FURNISHED ON AN "AS-IS" BASIS. CARNEGIE MELLON UNIVERSITY MAKES NO WARRANTIES OF ANY KIND, EITHER EXPRESSED OR IMPLIED, AS TO ANY MATTER INCLUDING, BUT NOT LIMITED TO, WARRANTY OF FITNESS FOR PURPOSE OR MERCHANTABILITY, EXCLUSIVITY, OR RESULTS OBTAINED FROM USE OF THE MATERIAL. CARNEGIE MELLON UNIVERSITY DOES NOT MAKE ANY WARRANTY OF ANY KIND WITH RESPECT TO FREEDOM FROM PATENT, TRADEMARK, OR COPYRIGHT INFRINGEMENT.

Use of any trademarks in this presentation is not intended in any way to infringe on the rights of the trademark holder.

This Presentation may be reproduced in its entirety, without modification, and freely distributed in written or electronic form without requesting formal permission. Permission is required for any other use. Requests for permission should be directed to the Software Engineering Institute at [permission@sei.cmu.edu](mailto:permission@sei.cmu.edu).

This work was created in the performance of Federal Government Contract Number FA8721-05-C-0003 with Carnegie Mellon University for the operation of the Software Engineering Institute, a federally funded research and development center. The Government of the United States has a royalty-free government-purpose license to use, duplicate, or disclose the work, in whole or in part and in any manner, and to have or permit others to do so, for government purposes pursuant to the copyright license under the clause at 252.227-7013.



Software Engineering Institute

CarnegieMellon

Architecture + TSP = High Quality + Fast  
© 2011 Carnegie Mellon University

32

