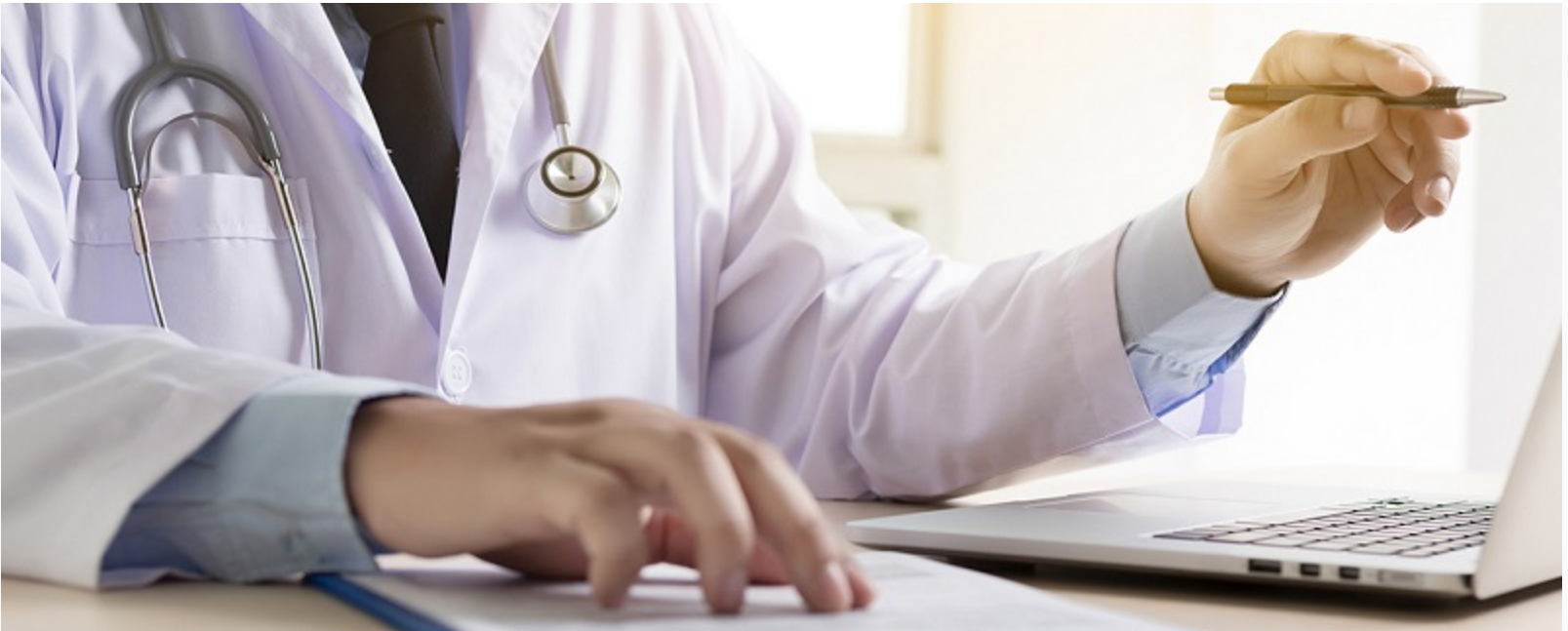


Carnegie Mellon University Software Engineering Institute



SEI Bulletin — April 4, 2018

SEI CERT Division Maps HIPAA Security Rule to Cyber Resilience Review

To help organizations not only meet HIPAA requirements but also assess larger issues of cybersecurity preparedness and resilience, Matthew Trevors and Robert Vrtis, members of the CERT Cybersecurity Assurance team, and Greg Porter of the Carnegie Mellon University Heinz College, recently collaborated on a mapping of the HIPAA Security Rule to the SEI [Cyber Resilience Review \(CRR\)](#), a no-cost, non-technical, voluntary assessment tool created by the SEI for the Department of Homeland Security (DHS). The CRR is designed to evaluate an organization's operational resilience and cybersecurity practices. The team's mapping of the HIPAA Security Rule to the CRR has just been published as an [SEI Technical Note](#).

[Read more.](#)

SEI NEWS

- [SEI CERT Division Launches Professional Certificate Program](#)
- [2017 SEI Year in Review Available for Download](#)

- [Nominations Sought for 2018 IEEE/SEI Watts S. Humphrey SPA Award](#)

Join Our Mailing List

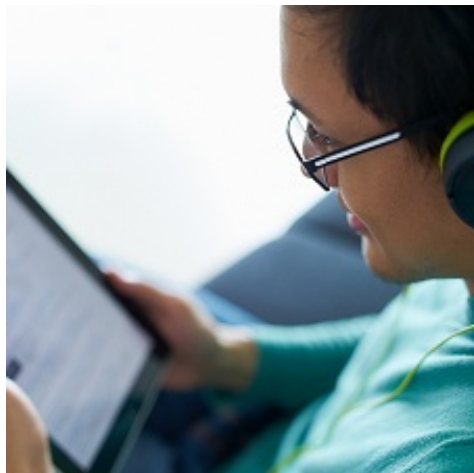
Visit Our Website



SEI Blog

Recent posts

- [Fighting Chance: Arming the Analyst in the Age of Big Data](#)
- [Implications and Mitigation Strategies for the Loss of End-Entity Private Keys](#)



SEI Podcast Series

Available in video and audio formats

- [Is Software Spoiling Us? Technical Innovations in the Department of Defense](#)
- [Is Software Spoiling Us? Innovations in Daily Life from Software](#)



SEI Events

Featured events

- [Virtual SEI: Blockchain: Your Questions, Our Answers](#)
- [NDIA Agile in Government Summit \(co-hosted by the SEI\)](#)
- [SATURN 2018](#)

SEI Cyber Minute

Short video snapshots of SEI work from our experts

- [Using Augmented Reality to See Real Opportunity](#)
- [Safety-Critical Design by Shopping](#)



SEI Training

- [Documenting Software Architectures](#)
May 23-24, 2018 (SEI Pittsburgh, Pa.)
- [Measuring What Matters: Security Metrics Workshop](#)
June 5-6, 2018 (SEI Arlington, Va.)

SEI Careers

Featured opportunities

- [Associate Software Engineer](#)
- [Talent Engagement Advisor](#)
- [Software/Infrastructure Engineer](#)
- [All current opportunities](#)

About the SEI Bulletin

The SEI Bulletin is a biweekly newsletter designed to keep you up to date on SEI news, events, research, and other matters of interest to the SEI community. We hope you find the SEI Bulletin useful and informative.

Send Us Your Story

Do you have a story about how an SEI technology has positively affected your team or organization? If so, the SEI would like to hear about it. Send a short summary of your success to info@sei.cmu.edu and you could be featured in a future issue of the SEI Bulletin.



Software Engineering Institute | Carnegie Mellon University | 4500 Fifth Avenue, Pittsburgh, Pa. 15213

Our mailing address is

info@sei.cmu.edu

Want to change how you receive these emails?

You can [update your preferences](#) or [unsubscribe from this list](#).